





Our material compositions are as individual as your requirements. The ideal composition of polyurethane, resin or rubber with the corresponding grain guarantees the perfect result. Regardless of whether initial equipment, tools with a long service life, economic variants or special glass: you decide what you need, we have the matching series.

THE GLOSS EXPERT: SERIES CE

Brilliantly white cerium oxide with an extremely fine grain is embedded in elastic resin, a rubber or polyurethane bond, depending on the application, for the best gloss possible.

EDGE PROFILES

	Flat glass
	Miter 45°
	Bevel
	Laminated safety glass (LSG)
	Arris

MACHINES

Single and double edger machines and machines with few spindles

TOOL

Product :	ARTIFEX CE - R
Bonding :	Rubber vulcanised
Grain :	Cerium oxide
Hardness :	Hard elastic
Colour :	Yellow
Delivery form :	Cup wheels with plate Rings
Dimension :	Ø 75 - 170 mm

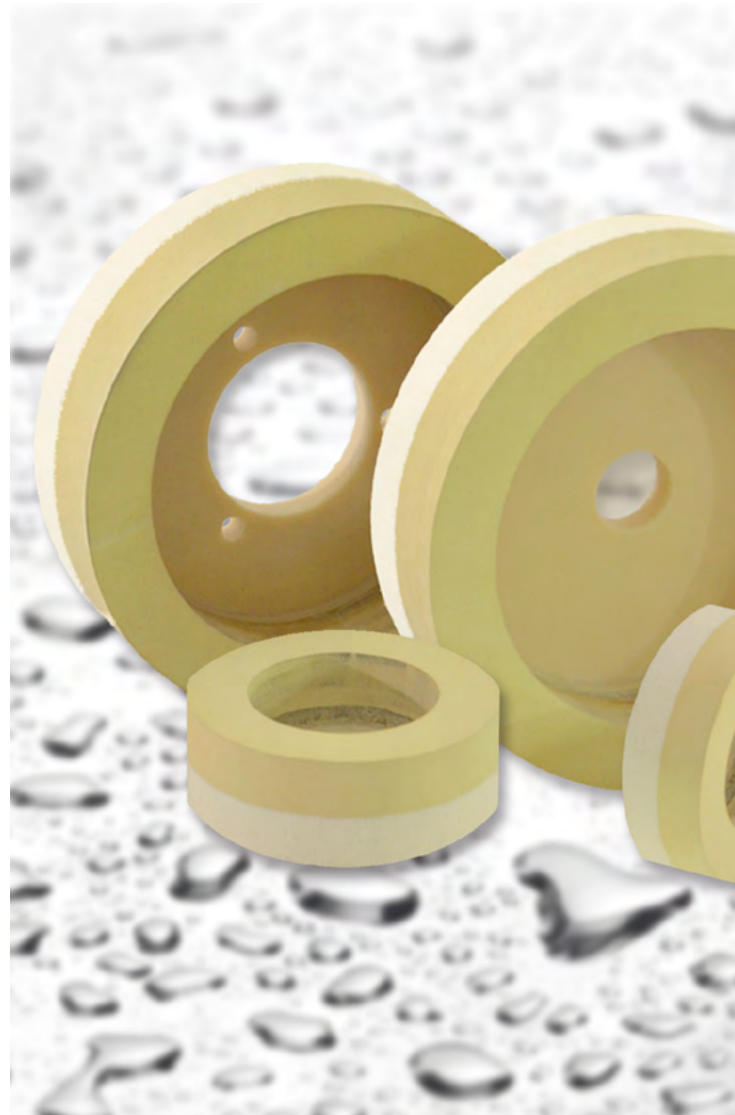
RESULT

High gloss

ADVANTAGE

Long service life

It is not always the large machines that achieve the ideal results for your requirements. Glass edge finishers with just a few polishing spindles can also be excellently equipped with our tools.



The ARTIFEX promise

We stand for tools that guarantee the highest quality standards. All ARTIFEX products are „Made in Germany“ and their above-average service life speaks for itself.

Our service: You have individual requirements, we offer customised solutions regardless of the material, shape or dimensions. We will gladly advise you on your premises.