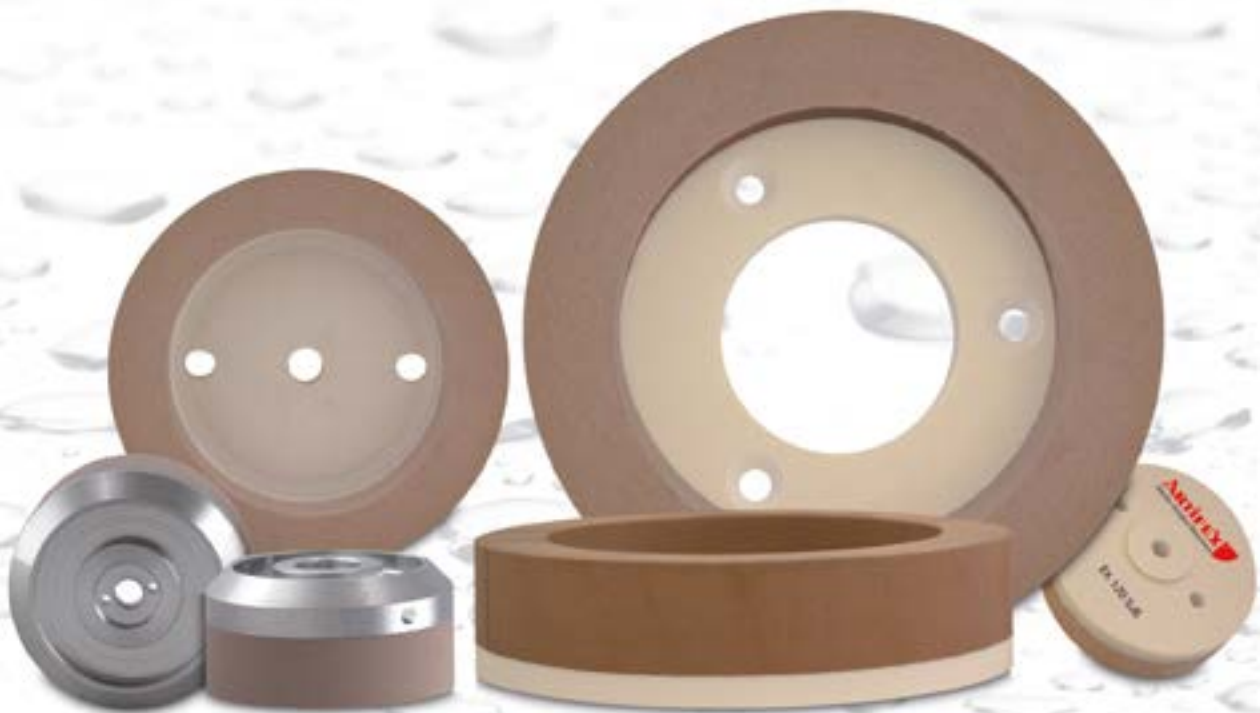


Elastic bonded abrasive for glass processing



**ARTIFEX EK 120 SJ6**

for excellent arris polish with high infeed rate option

Our material compositions are as individual as your requirements. The ideal composition of polyurethane, resin or rubber with the corresponding grain guarantees the perfect result. Regardless of whether initial equipment, tools with a long service life, economic variants or special glass: you decide what you need, we have the matching series.

## THE VERSATILE ONE: SERIES EK 120 SJ6

A balance mixture of aluminum oxide in a special polyurethane bond ensures versatile applicability and creates a shiny arris.

## EDGE PROFILES



Arris

## MACHINES

All common straight, - and double edging machines

## TOOL

Article :	ARTIFEX EK 120 SJ6
Bonding :	Foamed polyurethane
Grain :	White fused aluminium
Colour :	Light Orange
Delivery form :	Cup wheels
Dimension :	Ø 75 - 170 mm

## PRODUCT CODE

Bonding	_____	_____	_____
Grain	_____	_____	_____
Type of grain	_____	_____	_____
Article			
		EK	120 SJ6

## RESULT

- Excellent arris polish

## BENEFITS

- Easy to use
- Versatile application
- High infeed rate option
- Outstanding price-performance ratio

ARTIFEX Dr. Lohmann GmbH & Co. KG  
Feldstrasse 8 | 24568 Kaltenkirchen | Germany  
Phone: +49 4191 935 0  
E-mail: ax-sales@artifex-abrasives.de | Web: www.artifex-abrasives.de



## The ARTIFEX Promise

We stand for tools that guarantee the highest quality standards. All ARTIFEX products are „Made in Germany“.

**Our service:** You have individual requirements, we offer customised solutions regardless of the material, shape or dimensions. We will gladly advise you on your premises.